

About us

We are a landscape architecture & inclusive design consultancy, specialising in the following areas of work:

- **Public Space Access & Inclusion**
- **Healing & Care Environments**
- **Learning environments**
- **Parks & Play**
- **Gardens & Residential**
- **Sustainable Business & Industry**
- **Training, Research & Education**

If it sounds like we might be able to help, please take a look at what we do, www.westleydesign.co.uk & contact us to discuss your project.

Inclusive Approach

Westley Design begins any project with a thorough understanding of its physical and human context. Three principles underpin our approach to each challenge, and the service we deliver.

Inclusive Design

That is to say:

- 'Stakeholders' innovatively involved in the design process
- Creatively balancing future user's needs & aspirations
- Delivering equality of enjoyment & access; both physical, sensory, social & information / interpretation

Multi-disciplinary Collaboration & Innovative Solutions

Our working practice involves direct collaboration with a select range of complementary professionals & designer-makers, appropriate to each project's requirements. This approach allows us to deliver an efficient, project specific service, from concept to finished product, leading to original, creative, holistic solutions.

Sustainable Relationships between People & Place

Successful places are nurtured by people who use, love & care for them, because of the benefits which they bring to their lives. Our design process aims to foster these relationships through creative consultation; extending throughout the design process and continuing the engagement into the life of the completed space. Westley Design is skilled at resolving conflicts & building positive partnerships for action between different users and the places that are special to them.

HEALING & CARE ENVIRONMENTS PORTFOLIO CASE STUDIES

Connecting creativity with enhanced environments for health & well being

Michael Westley is a Department of Health NHS Design Review Panel Member.

Westley Design works extensively in healthcare settings, including: acute care/ general hospitals, primary care settings, hospices, horticulture therapy, elder & care and child care environments.

We believe in the multi-sensory therapeutic potential of natural settings - gardens & landscapes to positively affect the health & well-being of all their community: service users, clinical and support staff & visitors. Objective studies prove that enhanced external spaces in healthcare settings enhance speed of patient recovery, reduce drug regimes, and improve staff's working lives & productivity.

Westley Design work in consultation with the whole community of a space to produce a place which works at a number of levels:

- Clinical program support – we work specifically with the clinicians and health / care specialist to ensure that the space is designed to be integrated directly into their clinical program, supporting physical and or psychological / counselling functions.
- General therapeutic benefit – Even the simple presence of such enhanced environments can engender well-being in staff, management, service users and their visitors, in often stressful contexts.
- Flexible 'Community' Amenity – Our designs are often used effectively as venues for staff meetings & conference break out spaces, arts performance or exhibition venues.

We believe that play design should be a collaborative process, engaging future users in a creative and fun process, aimed at meeting their needs and building a relationship of respect for the setting and other users.

Westley Design believe that environments need to grow out of the creativity of their users, and are flexible and robust enough to allow each succeeding generation of users to re-engage, re-invent, and gain personal connection to their environment.

Both the consultation process and the final product which we arrive at invariably involve the creative input of a select range of designer makers from a variety of disciplines.

Set out below are recent case studies from our learning environment portfolio.

January 2009

westley design

St.Rocco's Hospice: Inclusive, Therapeutic Design Landscape

(2007 -)

The challenge

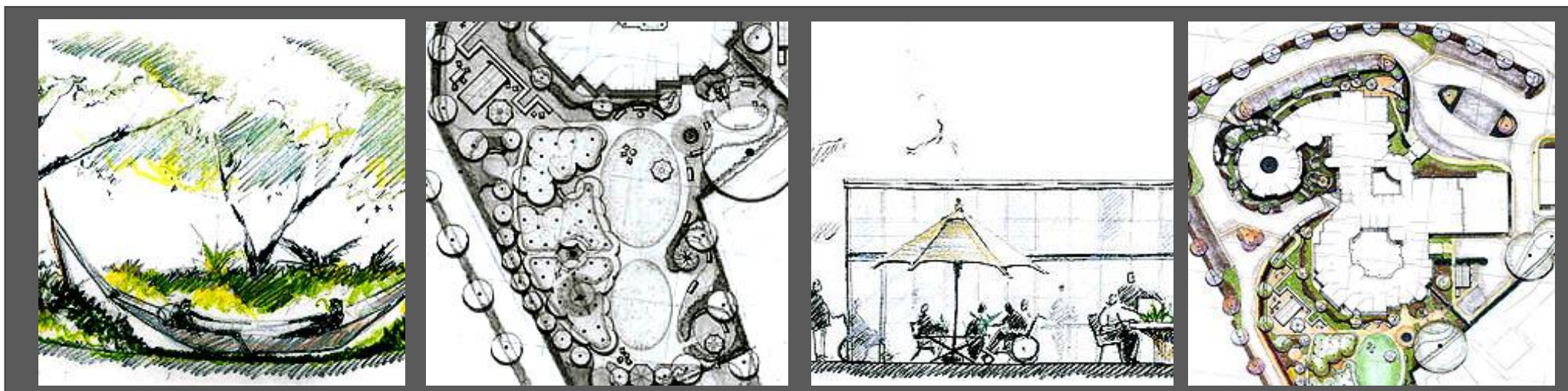
The hospice is currently undergoing an ambitious program of expansion. The intention was to work with the staff to develop a design brief and mandate for a useful space that addresses the needs of elderly and infirm patients, their families and visitors.

What we did

Westley Design facilitated an inclusive hospice community consultation & design process leading to an initial design report. This documented process was then evolved into a project design and is currently being used to generate funding. The project aims to create an enriched multi-sensory experience through planting and the introduction of interactive design elements, shelter and comfort opportunities to encourage outdoor use and enjoyment. The ambition is to produce a safe environment suitable for the delivery of a complete and full quality horticultural therapy programme.

The result

The Hospice team has a clear vision of the landscape they require and need and the funding team are engaged in developing funding to support this aim.



Compton Hospice: Inclusive, Therapeutic Design Landscape (2007 –

The challenge

The hospice is set in the grounds of a Victorian villa with extensive well planted grounds. The intention was to create an enriched space that resolved the inherent problems of inaccessibility caused by the current design impracticalities of the site & to make a useful space that addresses the needs of elderly and infirm patients, their families and visitors.

What we did

Westley Design facilitated an inclusive hospice community consultation & design process leading to an initial design report. This documented process secured funding for the project. The project design achieved the following key aims:

- Improved access to all areas of the magnificent (but currently inaccessible) grounds
- Enriched multi-sensory experience through planting and the introduction of new materials
- Creation of new use areas, providing appropriate shelter and comfort opportunities to encourage outdoor use and enjoyment
- The creation of a safe environment suitable for the delivery of a complete rehabilitation programme
- Introduction of an inspiring range of creative installations, and furnishings lending a distinctive sense of place and quality to Compton Hospice

Westley Design produced & managed the contract package, tender process and construction management.

The result

The project is nearing completion due in spring 09



Grenville Ward Courtyard Garden, Royal Cornwall Hospital, Truro (2004 – 2006)

The challenge

The site was a harsh, single storey, paved courtyard, used as a smoking area by staff from the elderly patient post operative recovery ward adjacent. The brief for the project from the hospital staff and health arts coordinator was to produce a high quality therapeutic courtyard garden environment for staff, patients and visitors and a venue for future arts projects and commissions.

What we did

Working with ward staff and a diverse hospital management client team lead by the Arts Coordinator, Westley Design facilitated an inclusive design consultation process. This documented process secured approval for the detailed design phase. The design aimed to produce a suite of outdoor 'rooms', with multi-sensory opportunities for patient interaction and recreation appropriate to the elderly age profile of ward users. Staff required a respite area with a degree of separation. The design focussed on the access needs of frail elderly wheelchairs users and ambulant disabled of reduced mobility to interact more closely with the plants. Westley Design produced the final masterplan, details and planting design, and undertook construction management. We also worked with specialist designer makers John Christian & Tulip Art to finalise designs for furnishings.

The result

The brief was successfully answered, producing tremendous support from the staff in the process and in aftercare for the landscape. The courtyard is successfully used by both clinical staff and service users. The scheme has generated client support for extending this type of project more widely across the hospital campus.



Haematology & Oncology Centre Courtyard Garden, Royal Devon & Exeter Hospital (2001 - 02)

The challenge

The site was a three sided courtyard exposed on one side to a vehicle drop-off point at the entrance to the newly built unit. The brief for the project from the clinical staff and health arts organization client team was to produce a high quality welcoming environment for staff, patients and visitors & a place where clinicians might meet for consultations with service users.

What we did

Working with client team, Mike Westley (in partnership with Design) facilitated a brief consultation process. The design aimed to:

Provide a welcoming entrance approach from the vehicular drop-off

Create a series of individual respite places for staff and meeting venues for carers and patients

To provide a landscape context for clinicians to develop an understanding in service users of the nature of their illness with reference to plant forms within the natural setting. To achieve this we worked with glass artist Sue Kinley to design glass sculptures echoing microscopic cellular structures in plants, complementing the richly sensory herbaceous perennial planting carpet. Mike Westley (with the Mor Design team) produced the final masterplan, details and planting, and undertook construction management.

The result

The brief was successfully answered and has produced a unique, well used space offering an enhanced & enriched environment for all space users



Clyst & Creedy Ward Courtyard Garden, Royal Devon & Exeter Hospital (2001 - 02)

The challenge

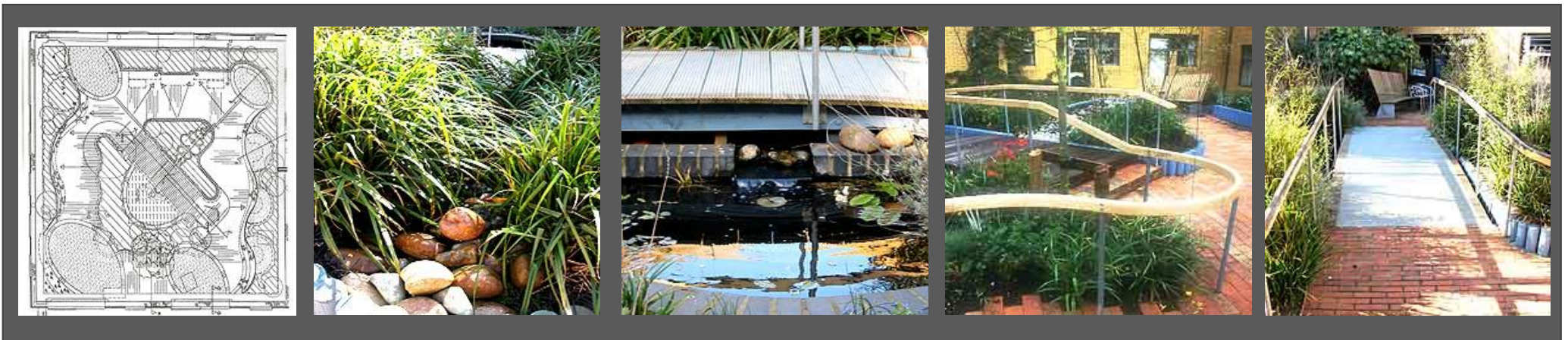
The site was a harsh, single storey paved courtyard, containing unused high brick planters. It was mainly used as a smoking area by staff from the stroke patient recovery ward adjacent. The brief for the project from the hospital staff and health arts organization was to produce a high quality environment for staff, patients and visitors.

What we did

Working with unit's staff / client team, Mike Westley (in partnership with Swan Paul Partnership & Osen Structures) facilitated an inclusive consultation process with the wider community of the courtyard. This documented process secured approval for the detailed design phase. The design aimed to: Humanize harsh rectilinear quality of old courtyard, Create an oasis respite place for staff and meeting venue for carers and patients, Provide opportunity for further creative intervention, Provide tactile resting rail support route around a multi- textured and gentle level changing route, , Provide enriched sensory stimulation through planting selection and furnishing materiality, ameliorate environmental exposure by 'wind-masher' sails, canopies and plant textures, Support the occupational therapy program in balance and spatial orientation /sensory development work with elderly & stroke patients. Mike Westley produced the final masterplan, details and planting, and undertook construction management.

The result

The brief was to successfully answered and beyond the specific clinical function, has produced an indirect un-quantifiable benefit of enhanced & enriched environment for all space users (with anecdotal staff evidence of reduced stress & enhanced speed of recovery in service users)



Truro Health Park – Arts & Landscape Strategy (2007- 8)

The challenge

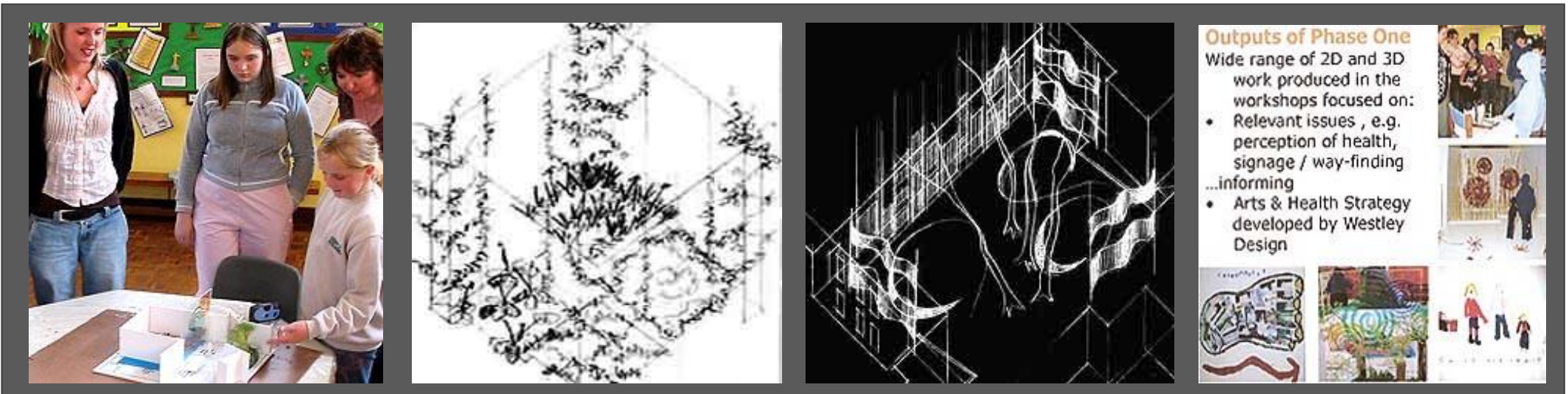
The Truro Health Park will bring together a number of GP surgeries together with a range of complementary therapies in a central Truro location on a visually critical site in the city. The development has been led by Community 1st in partnership with, dac architects, and Cornwall Primary Care Trust. Arts for Health Cornwall contracted landscape advisor Westley Design & advisory artist, Rob Olins, to inform development, including the delivery of a community consultation. The process aims: To raise awareness of public health issues, importance of improved environment within healthcare settings, To generate palette of ideas, objects and materials to define ‘feel’ of the Health Park & stimulate ideas for interventions in specific spaces, involving a range of makers & designers, To develop designs in partnership with public artists to create therapeutic courtyard environments

What we did

Westley Design & sculptor Rob Olins led series of community workshops with residents (future THP users) from surrounding communities, to assist development of strategy. The then worked with Arts for Health to produce an arts strategy for the whole site together with a set of commissions for specific artists to address. A team of artists were then appointed to carry out specific interventions in the park working in partnership with Olins & Westley Design.

The result

Specific designs for both internal and external areas of the Health Park campus are currently under development due for completion on site in 2009.



Truro Health Park – Courtyard Design (2007-)

The challenge

The Truro Health Park Arts & landscape Strategy produced by Westley Design for Arts for Health Cornwall with sculptor Rob Olins used extensive community and stakeholder consultation to:

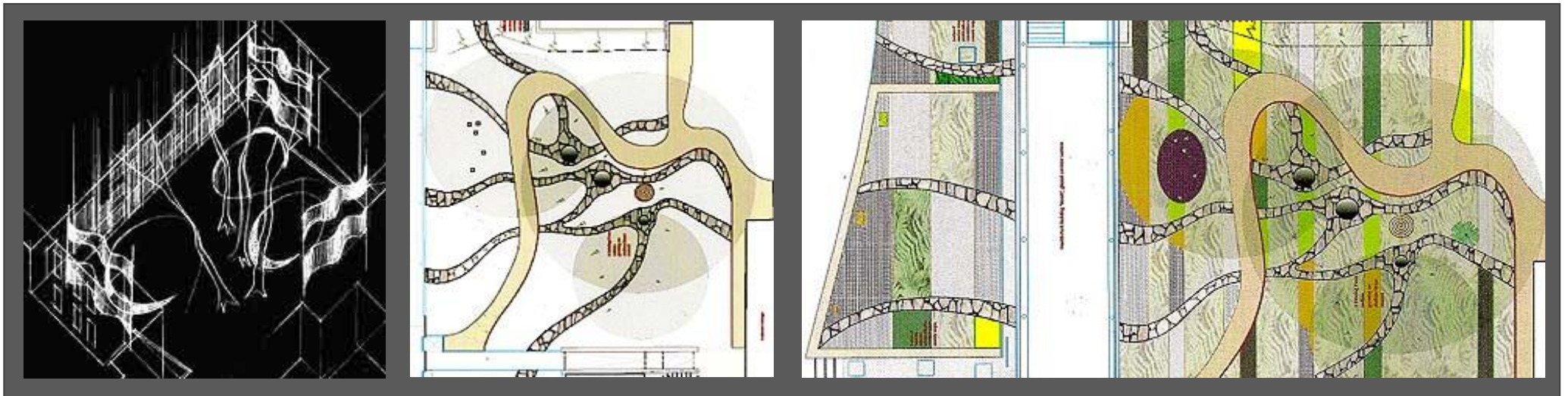
raise awareness of public health issues, importance of improved environment within healthcare settings, generate palette of ideas, objects and materials to define ‘feel’ of the Health Park & stimulate ideas for interventions in specific spaces, involving a range of makers & designers. This was brought together into a briefing document and separate commissions let to designers to develop these ideas in specific areas of the building and landscape of the health Park. Westley Design was appointed to offer specialist landscape advice to the designer team and separately commissioned to create a ‘therapeutic’ courtyard environment in one of the spaces.

What we did

Westley Design & sculptor Rob Olins took notions of a protected paradise space that had come out of the consultation and worked together to achieve a design for a space which although highly prominent, adjacent to the building’s main ‘street space’ would not initially be accessible to the public. We therefore designed a space that worked on a psychological level to invite the viewer into a series of unfolding, connected spaces, formed by planting and linked by a sinuous, sculpted line that followed a pathway of site from foreground to distance.

The result

Our designs have been adopted along with the other designers program of interventions for both internal and external areas of the Health Park campus, and due for completion on site in 2010.



St. Martins Elder Care Home (2006 -)

The Challenge

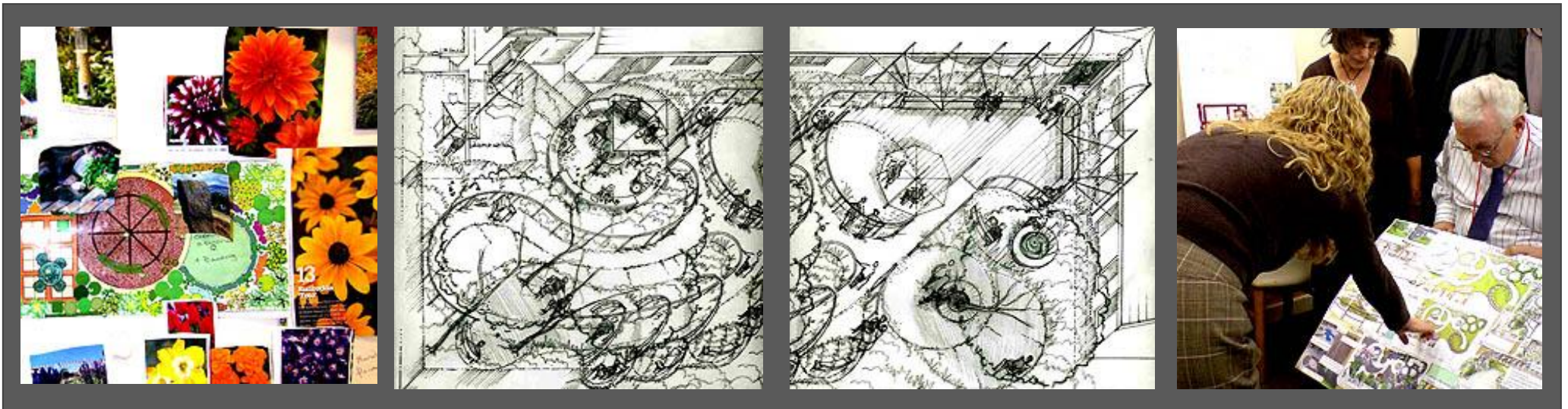
The Site comprises sloping plane of grass with very limited solitary shrub & tree planting surrounded by mature tree planting facing onto the rear of the elder care home and virtually unused by staff and patients due to its inaccessibility for frail people with mobility issues. The brief produced by St. Martins Home was to create an enriched space that resolved problems of inaccessibility & to make a useful space that addresses the needs of elderly and infirm patients, their families and visitors.

What we did

Westley Design facilitated an inclusive consultation & design process for the community of the home, including a project by local garden design students from the leading to an initial landscape strategy report that explored a client need analysis, the design challenges and the design solutions. Following approval of this stage, Westley Design produced a Landscape Design Masterplan Document setting out the final design of the surfaces, furnishings, planting and special features in a design proposal for therapeutic garden design.

The result

This document is now being used by St. Martins as a document to attract funding and to develop a phased (order of costs) plan for the project.



Magharalone Therapeutic Play Space Project & Cork Health Authority Training (2005-6)

The challenge

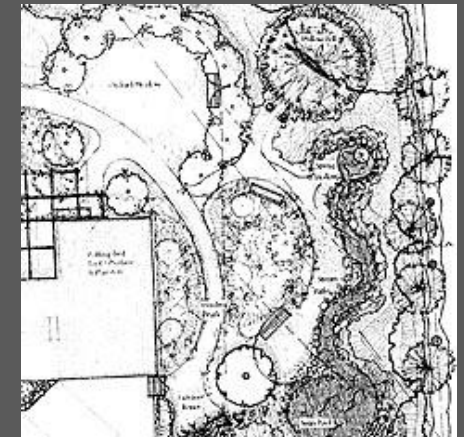
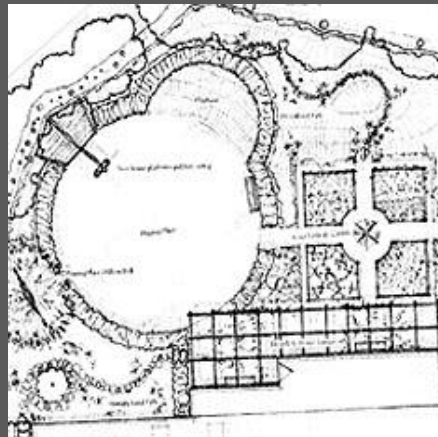
Eadaion Brannach, an inspirational Consultant Occupational Therapist & Attachment Counsellor has developed clinical specialism in Sensory Integration & Attachment Classification. Her work involves analysing the individual's capacity to maintain an appropriate arousal state when engaged with others. Sensory Integration Theory deals with understanding of how we process sensations and how we can use sensory experiences to regulate our emotional states and behaviour. Attachment Classification gives us an understanding of the nature of parent child relationships and how this impacts on; one's ability to regulate arousal states, the capacity to learn, and the capacity to engage in healthy attachment relationships with partners and children. Eadaion has integrated these two approaches and developed her own treatment approach called "Sensory Attachment Intervention" (SAI). It combines the use of sensory regulating techniques, parent/carer management strategies, and provision of therapeutic space (indoor and outdoor). From her own practice Eadaion was able to observe how much benefit was gained when working with clients in garden settings rather than inside buildings.

What we did

Mike Westley worked with her to develop a landscape setting for her own treatment centre that would provide a series of specific sensory and spatial settings. The therapist might then develop client specific sets of activities based on combinations of different experiences obtained from the landscape settings. Westley Design later used the principles developed in their collaboration to deliver a program of training for children's services providers commissioned by the Cork Health Authority.

The result

This proposal formed the basis for a separate set of training sessions delivered to a private service provider for the Cork Health Authority. The proposal for the garden never went ahead due to the sale of the treatment centre; however Eadaion continues her unique practice as a consultant and Westley Design remain committed to the principles developed during this project.



Play For Life Inclusive Play Project Royal Cornwall Hospital (2007 -)

The Challenge

The instinct to play is fundamental to human behaviour at all ages. In children, play is essential to the development of the whole child; physical, mental, intellectual, social & spiritual. Children learn both life skills and knowledge more deeply & intuitively through play. If the nature of the play engages all of the child's senses & their imagination & creativity, that learning is exponentially greater. As with its learning benefits, so play brings healing benefits which increase with multisensory engagement & the stimulation of the imagination & innate creativity of the child. Whatever the child's range of sensory or intellectual ability, there is always a form of play which they can engage in? Play is just as important to children in hospital as it is to children in the wider community. It is difficult to overestimate the impact on a hospitalized child of an environment dominated by clinical routines dominate each day. This project has sought to listen to the younger hospital patients as well as adults. They've made it clear that they have aspirations to be outdoors and the need to respond to acknowledge the 'whole' patient experience, not just the routines of hospital life.

What we did

Westley Design advised on the design & delivery of an Inclusive Consultation & Design Process developed by RCHT with Royal Cornwall Hospital School. We then produced an inclusive play design masterplan and report in support of funding application.

The result

The Royal Cornwall Hospital Inclusive Design Play space is designed to offer the child, carer, clinician, teacher or health worker a range of different sensory, intellectual, social & physical/ mobility options for the play experience. All areas and play elements are designed to be used by children of all abilities & mobility to different degrees, depending upon their capacity and choice to interact. As well as specific therapeutic effectiveness, the design is intended to offer a place of respite and sensory richness to children, teenagers & adults. It is a place with something to offer to everyone in the wider hospital community. The project proposals comprise a diverse landscape that will entertain, inspire, & absorb the users, taking them out of the hospital environment and into the world of their own imagination. The proposal is currently being promoted by the trust for funding.

